

Chapter 6

Map Reading

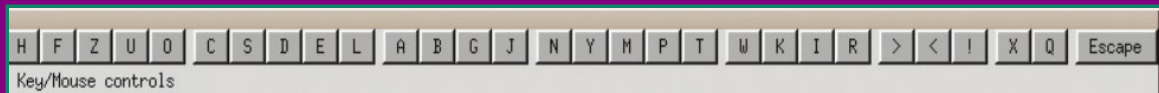


Fig. 6.2 Sun Clock menu bar

S	Solar time mode	Displays the time based on the position of the Sun
L	Legal time mode	Displays the standard time
A	Time forward	To move the time forward
B	Time backward	To move time backward
G	Adjust process value	To change the speed at which time or animation happens
N	Toggle Night	To show or hide the separation between night and day
Y	Toggle Sun/Moon	To display or hide the Sun and the Moon
M	Toggle Meridian	To show or hide longitudinal lines

T	Toggle Tropic/Equator/Arctic	To show or hide the main latitudinal lines
!	Clock and Map Window	To display or hide the map of the world showing time zones

Multiple Choice Questions

1. Identify the following tool, Select Features available in the software. QGIS DESKTOP.?



2. Identify the Toggle Editing tool in Quantum GIS software from the following.?



3. Identify the Add features tool in Quantum GIS software from the following.?



4. Which of the following type of layer is to be used to mark the rivers ,Roads in a map prepared by Quantum GIS software?

- a) Point
- b) Line**

c) Multi point

d) Circle

5. Which of the following type of layer is to be used to mark the house, well in a map prepared by

Quantum

GIS software?

a) Point

b) Line

c) Multi point

6. Which one of the following layer type is used to mark the lakes in a map prepared by using

Quantum GIS software?

a) Line

b) point

c) Circle

d) polygon

7. Which of the following is a Geographical Information system software?

a) Sun Clock

b) Marble

c) Quantum GIS

d) Wikimapia

8. What can you see if you select one layer from the layer box in QGIS software, right click on it and select Open Attribute Table?

a) Displays the window to change the colour of the layer.

b) Displays the window to change the layer type.

c) Displays the informations (attributes) recorded in the layer.

d) Displays the window to change the thickness of the layer

9. Choose from the following the correct steps to add information to a layer in a map prepared using the software, QGIS DESKTOP

a) Toggle Editing → Add Feature

- b) Select Feature → Add Feature
- c) Toggle Editing → Modify Feature
- d) Select Feature → Modify Feature

10. Which of the following option can be used to do Buffering in a map opened using the software QGIS Desktop?

- a) Composer Manager
- b) Fixed distance buffer**
- c) Identity Features
- d) Add Features

11. By which name are the characteristics and features of a house marked in Quantum GIS are known?

- a) Properties
- b) Feature
- c) Attributes**
- d) Buffer

12. You need to find out which buildings will be affected if the width of a road passing through a densely populated area is increased by 5 metres on either sides. Which technique in Quantum GIS software you would use for this?

- a) Attributes Editing
- b) Toggle Editing
- c) Buffer**
- d) Feature editing

13. To remove a layer in Quantum GIS, right click on the layer and then click

- a) Delete
- b) Move to Trash
- c) Remove**
- d) Move to bin

14. What is the extension files used in Quantum GIS software?

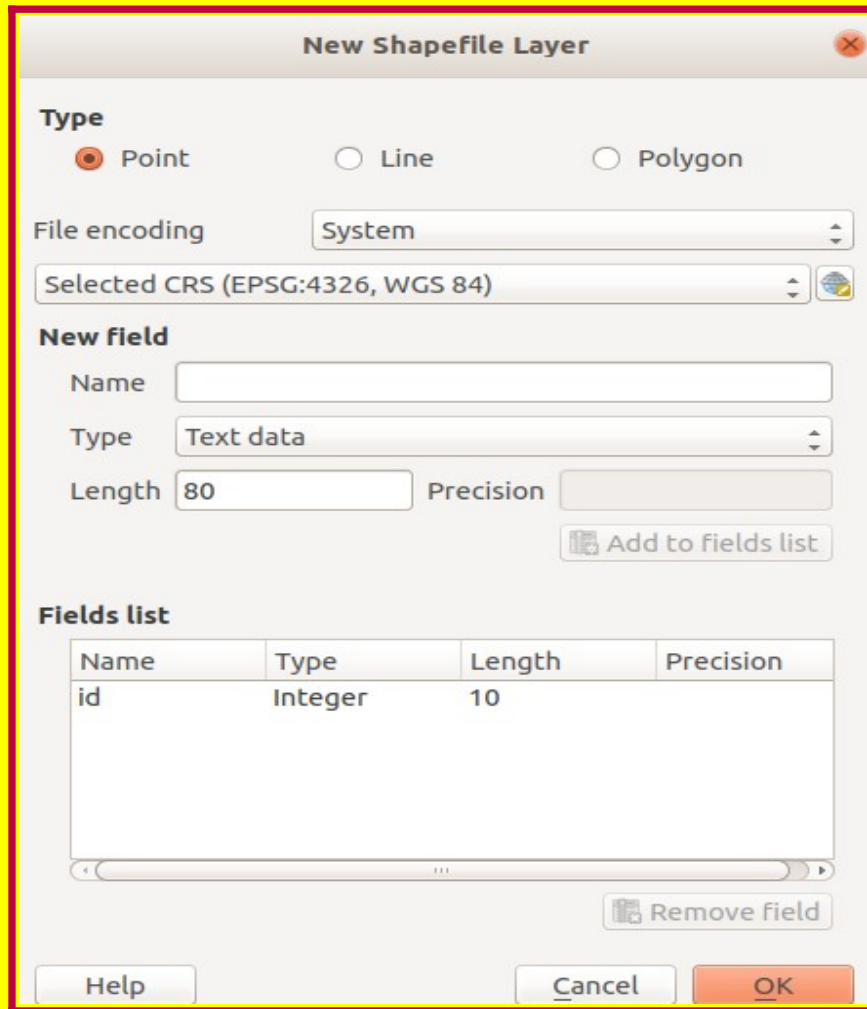
- a) .qgs**

- b) .shp
- c) .ggb
- d) .png

15. What is the extension of layer files used in Quantum GIS software?

- a) .qgs
- b) .shp**
- c) .ggb
- d) .png

16. Given image is a window opened in Quantum GIS Software to add a new layer named Well to the map, to give information about wells. How can we open this window?



a) Layer → New Layer → New Shapefile Layer

b) Layer → Create Layer → New Spatia Lite Layer

c) Layer → Create Layer → New Shapefile Layer

d) Layer → New Layer → New SpatiaLite Layer

17. Given image is a time zone map displayed with a date set in the Sunclock software. Observe the map

and select the correct answer from the statements given below?



- a) The length of the day is longer than night on the date set.
- b) The sun does not set on the north of the equator on that date
- c) The length of the night is longer than day on the date set.
- d) The length of day and night are equal on the date set.**

18. Choose from the following the use of tool T (Toggle Tropic/Equator/Arctic) in Sun Clock software?

a) To show or hide Longitudinal Lines

b) To show/hide Latitudinal lines

c) To display or hide the sun and moon

d) To display standard time

19. Choose from the following the use of tool A in Sun Clock software?

a) To change the time in Sun Clock forward

b) To change the time in Sun Clock backward

c) To show the sun

d) To show latitudinal lines.

20. Which of the following is an online mapping system?

a) wikimapia

b) Marble

c) Wikipedia

d) Sun Clock

21. Which of the following is used to create the image of the map opened in Quantum GIS software?

a) Composer manager

b) New print composer

c) Pan Map d) Identify Features

22. Which of the following tool is used in Sun Clock software to display the time based on the position of the sun.

a) Solar time mode (s)

b) Legal time mode(L)

c) Toggle night (N)

d) Toggle Sun/Moon

23. Which of the following is a Geographical Information system software?

a) Sun Clock

b) Marble

c) Quantum GIS

d) Wikimapia

24. Which one of the following layer type is used to mark the lakes in a map prepared by using

Quantum GIS software?

- a) Line
- b) point
- c) Circle

d) polygon

25. The picture of the Clock and the Map window of the software, Sunclock, is given. Observe the picture and choose the correct statement from the following?



- a) The length of the day in southern hemisphere is short.
- b) The length of the day in Northern hemisphere is long.
- c) The length of day and night is equal.

d) The length of night in Northern hemisphere is long

26. What is the function of the tool 'B' in the software, sun clock?

- a) To move time forward
- b) To show the sun

c) To move the time backward

- d) To show the longitudinal lines

27. What is the function of the tool 'A' in the software, sun clock?

a) To move time forward

- b) To show the sun
- c) To move the time backward

- d) To show the longitudinal lines

28. What is the function of the tool 'y' in the software, sun clock?

- a) To move time forward

b) To show the sun

- c) To move the time backward
- d) To show the longitudinal lines

29. What is the function of the tool 'M' in the software, sun clock?

- a) To move time forward
- b) To show the sun
- c) To move the time backward

d) To show the longitudinal lines

30. What is the function of the tool 'T' in the software, sun clock?

- a) To move time forward
- b) To show the sun
- c) To move the time backward

d) To show the latitudinal lines

31. Which of the following is the window which we get when the clock and the map tool(!) is clicked in the software, Sun clock?

- a) Solar Time Window

b) window containing latitudinal lines

c) Window containing the time zone.

d) Window containing longitudinal lines

32. Choose from the following the correct steps to add information to a layer in a map prepared using the software, QGIS DESKTOP

a) Toggle Editing → Add Feature

b) Select Feature → Add Feature

c) Toggle Editing → Modify Feature

d) Select Feature → Modify Feature

33. We can convert a map prepared in QGIS Desktop software, using the option, New Print Composer into different file formats. Choose one of such formats from the following.

a) svg

b) odb

c) odp

d) odt

34. Which of the following software is the most appropriate to find out the time zones passes through different countries?

- a) G-edit
- b) LibreOffice
- c) Gimp

d) Sun Clock

35. Which of the following option can be used to do Buffering in a map opened using the software QGIS Desktop?

- a) Composer Manager

b) Fixed distance buffer

- c) Identity Features
- d) Add Features

36. Which key in the keyboard is used to enable animation in Sunclock Software?

a)



b)



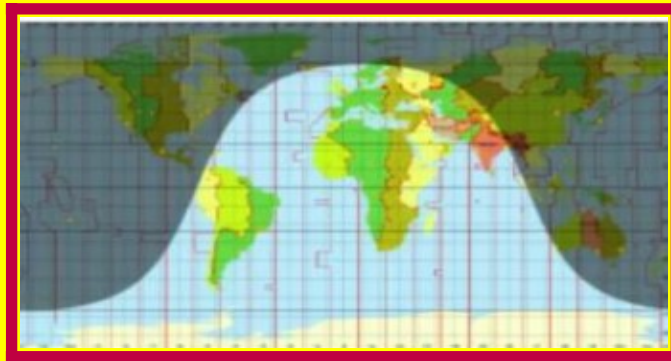
c)



d)



37. An image of the Clock & Map window in Sunclock software is given. Analyse the picture and find the correct statement from below?



a) In the south of the equator, length of nights are longer

b) Length of day is longer in the southern part of the equator

c) Length of day and night is equal everywhere

d) In the north of the equator, length of days are longer

38. Collaborative mapping is the method of mapping an area using the data given by users. Which of the following is not a collaborative map?

a) Open Street Map

b) Wikimapia

c) Google maps

d) Sunclock Map

39. By which name are the characteristics and features of a house marked in Quantum GIS are known as?

a) Properties

b) Feature

c) Attributes

d) Buffer

40. What is the extension files used in Quantum GIS software?

a) .qgs

b) .shp

c) .ggb

d) .png

41. What is the extension of layer files used in Quantum GIS software?

a) .qgs

b) .shp

c) .ggb

d) .png

42. Which tool in the Sunclock menu is used to display the **standard time** of a region?

a) L

b) y

c) T

d) M

43. An image of the Clock & Map window in Sunclock software is given. Analyse the picture and find the correct statement from below?



a) In
the
north
of the

equator, length of days are shorter

b) In the south of the equator, length of nights are longer

c) In the south of the equator, length of days are longer

d) The length of day and night is equal everywhere

Very Short Answer

1.A new vector layer is created in Quantum GIS Software by selecting Line as the layer type.

Which of the following can be included in this layer?

a) Road

b) Well

c) Pond

d) House

e) River

2. Which of the following is an online map?

a) Open Street Map

b) Quantum GIS

c) Arc GIS

d) Wikimapia

e) GRASS

3. In Quantum GIS software, a new layer was created with layer type Polygon. Which of the following can be marked in this layer?

a) Backwaters

b) Houses

c) Roads

d) Rivers

e) Fields

4. Which of the following is a GIS software for recording features and spatial information on the Earth's surface in different layers?

a) Quantum GIS

b) ArcGIS

- c) Stellarium
- d) KGeography
- e) Sunclock

5. Geographical information system software help us to collect surface features of the earth and locational Information in a server in the form of maps and data.

Identify the Geographical Information system software from the following.

a) QGIS Desktop

- b) Wikimapia
- c) Arc GIS**
- d) Sunclock

e) Openstreetmap

6. To print the map prepared using Geographical Information System software, it has to be exported as an image. Choose from the following the correct steps to do the same.

a) **Vector → Geoprocessing Tools → Fixed distance buffer**

b) **Toggle editing button → Add feature button**

c) **Project → New print composer → Add New map**

d) **Layer → Create Layer → New Shape file layer**

e) **Composer → Export as Image.**

7. Choose from the following the use of tool **A**, **Y** in Sun Clock software?

a) **To change the time in Sun Clock forward**

b) To change the time in Sun Clock backward

c) **To show the sun**

d) To show latitudinal lines.

8. Which of the following is an online map?

a) Open Street Map

b) Quantum GIS

c) Arc GIS

d) Wikimapia

e) GRASS

9. A new vector layer is created in Quantum GIS Software by selecting Line as the layer type. Which of the following can be included in this layer?

a) Road

b) Well

c) Pond

d) House

e) River

10. Which of the following are the uses of the Adjust Progress Value tool (G) in Sunclock software?

a) To change the time and date.

b) To make Time zones visible and invisible.

- c) To include various maps to the sunclock.
- d) To display latitudinal and longitudinal lines.
- e) To change the animation speed.

11. Which of the following is a GIS software for recording features and spatial information on the Earth's surface in different layers?

a) Quantum GIS

b) ArcGIS

- c) Stellarium
- d) KGeography
- e) Sunclock

12. Choose from the following the true statement about Toggle Meridian (M) and Toggle Tropic (T) in the Software, Sun Clock.

a) Toggle Meridian(M): To move the time forward

b) Toggle Meridian(M): To show or hide longitudinal lines.

c) Toggle Meridian(M): To Display or hide the Sun and the Moon.

d) Toggle Tropic(T): To show or hide the separation between night and day.

e) Toggle Tropic(T): To show or hide the main latitudinal lines.

13. Geographical information system software help us to collect surface features of the earth and locational information in a server in the form of maps and data. Identify the Geographical Information system software from the following?

a) QGIS Desktop

b) Wikimapia

c) Arc GIS

d) Sunclock

e) Openstreetmap

14. Nived is preparing a map in Quantum GIS. She built a vector Layer selecting the layer type point.

Which of the following information can be included in the Layer?

a) Ponds

b) House

c) River

d) Roads

e) Wells

15. Anu prepares a comprehensive map in the software, QGIS Desktop. He wants to create a new layer to mark the well. Which of the following steps he has to follow.

a) Layer → Create Layer → New Shapefile Layer

b) Select the layer type and give attributes →

Click OK → Give name → Save

c) Select the layer using the tool, Select Single Single Feature

d) Add Layer → Add Vector Layer.

16. Comprehensive map is included in the software, QGIS Desktop. A panchayath road on this map has to be widened on either side using the option, Buffering. Choose from the following the correct steps for doing this?

a) Select the layer, Panchayath Road using the Toggle Editing Tool.

b) Select the layer, Panchayath Road using the Select Single Feature Tool.

c) Select the layer Vector → Geoprocessing Tools → Fixed Distance buffer.

d) Layer → Open Attribute Table

e) Layer → Create Layer → New Shapefile Layer

e) Select the Layer → Open attribute table → Click Ok

17. To print the map prepared using Geographical Information System software, it has to be exported as

an image. Choose from the following the correct steps to do the same.

a) Vector → Geoprocessing Tools → Fixed distance buffer

b) Toggle editing button → Add feature button

c) Project → New print composer → Add New map

d) Layer → Create Layer → New Shape file layer

e) Composer → Export as Image.

18. Identify the true statement the tools 'Solar time mode (S) and Legal time Mode (L) in the Sun Clock software?

a) Solar Time Mode (S): To display or Hide the sun and the moon

b) Legal Time Mode(L): To move the time forward

c) Solar Time Mode (S): To Move the Time backward

d) Solar Time Mode (S): To displays the time based on the position of the sun

e) Legal Time Mode(L): To displays the standard time

19. Identify the steps to set time 1 day backward in the Clock/Map window of the software sunclock.

a) Set the progress value(G) as 1 hour

b) Set the progress value (G) as 1 day.

c) Press the tool Toggle Tropic(T).

d) Press the Tool Forward Time(A) once.

e) Press the Tool Backward Time(B) once.

20. Identify the true statements regarding the tools 'Toggle Night(T) and Toggle Sun/Moon(Y) in the software Sunclock.

a) Toggle Night(N): To set time forward or backward.

b) Toggle Night(N): To show or hide the separation between night and day.

c) Toggle Night(N): To display or hide Sun and Moon

d) Toggle Sun/Moon(Y): To display or hide Sun and Moon

e) Toggle Sun/Moon(Y): To show or hide the separation between night and day.

21. Identify the steps to set time 1 hour forward in the Clock/Map window of the software sunclock.?

a) Set the progress value(G) as 1 hour

b) Set the progress value (G) as 1 day.

c) Press the tool Toggle Tropic(T).

d) Press the Tool Forward Time(A) once.

e) Press the Tool Backward Time(B) once.